

MANHATTAN II NETWORK CARD



MYTEK Owner's Manual



Owner's Manual Ver. 1.1 / March 2018

© Mytek 2017

For news, driver updates, technical support, tips and further product information please visit our website:

mytekdigital.com

Technical support issues are handled via our online support ticketing system. Please enter details of the ticket in the support/download section on Mytek website.

MYTEK

148 India St.
Brooklyn, NY 11222

tel. +1 (347) 384-2687

Contents

- 1. **Introduction**5
- 2. **Package Content**.....5
- 3. **Features**6
- 4. **Quick Start**.....6
- 5. **Menu**7
 - 5.1 Menu Navigation7
 - 5.2 Menu Operation.....7
- 6. **Control App**.....8
- 7. **Firmware update**8
- 8. **Technical Specification**.....9
- 9. **Warranty**9

1. Introduction

Thank you for choosing the Manhattan II extension card from Mytek Digital.

The network extension card is a module that adds network streamer functionality to the Manhattan II DAC. Once installed, the DAC is able to playback the files coming from home network or usb flash memory plugged into the card rear panel.

The network extension card is a Universal Plug and Play (UPnP) rendering device. Typical UPnP environment consists of three necessary elements:

- **Server** enables transport of the music stored on the computer or NAS to some end-point
- **Renderer** converts the stream to format acceptable by the DAC.
- **Controller** offers a user interface for a convenient playback experience.

The Manhattan II DAC will play the following formats through the extension card:

- **PCM** up to 24bit / 192kHz
- **DSD64**
- **MQA** master quality files

The files can come from various sources:

- **USB Flash**
- **ROON**
- **TIDAL**
- **Deezer**
- **Qobuz**
- **DLNA/UpnP source**

All the best,
The Mytek Digital Team

2. Package Content

- Network extension card (sandwiched PCBs)
- Ribbon cable
- 5 x 4/40 screws
- Replacement back plate

3. Features

- Connectivity Protocol Support : DLNA/UPnP and ROON.
- Audio Decoding : FLAC, Apple Lossless, AAC, AIFF, MP3, WAV, WMA, OGG, Monkey's.
- MQA (Master Quality Authenticated) Support : MQA stream bit perfectly transported to the hardware decoder inside Manhattan II DAC
- Integrated Internet Streaming Music: TIDAL, Qobuz, Deezer
- Supports Gapless playback.
- Supports native DSD64 and DoP64 input from network
- Firmware update from internet.
- mconnect Multi-room technology : Simultaneous music play by multiple speakers with synchronization.
- Digital Media Server(DMS) function for serial flash memory: USB memory connected to network card module will be a DLNA server.

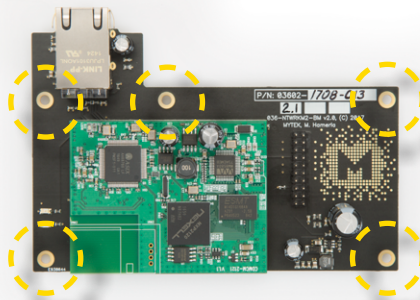
4. Quick Start

Installation of the card:

1. Start the installation with turning off the Manhattan II DAC and disconnecting it from mains
2. Unscrew the screws securing the top lid of the converter and remove the top lid.
3. Unscrew four screws that secure back plate (described OPTIONS>)

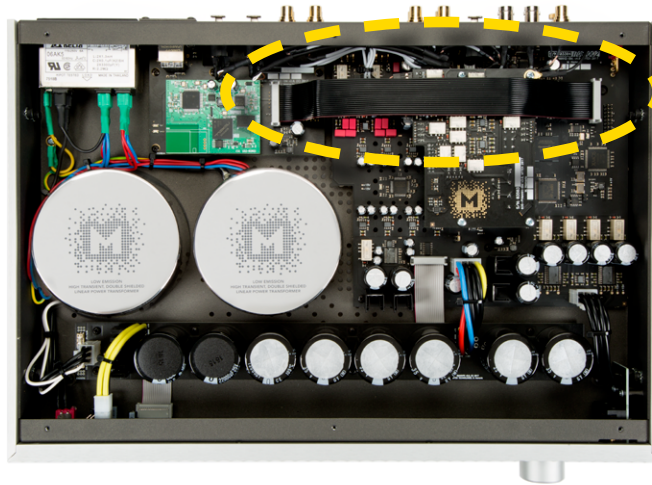


4. Place the card left of the main PCB so the RJ45/USB combo connector of the card lands in the space occupied earlier by the back plate.
5. Secure the board using 5 attached screws.



6. Tighten the replacement backplate to the Manhattan rear panel.

7. Plug one end of the black ribbon to the header on the extension card. The other end goes to the header on the Manhattan main PCB described „EXPANSION CONNECTOR“. Please don't twist the ribbon between the two connectors!



8. Put the top lid of Manhattan back and secure it with screws.
9. Connect an Ethernet cable from a network router, hub or switch to the Ethernet port on the expansion card rear panel.
10. Please install one of the suggested control apps and check if the card requires a firmware update. To do this you need to be connected to the internet. Firmware upgrade procedure is described further in the manual.
11. Please ensure that Manhattan II DAC firmware is up to date. It requires 1.10 firmware revision or higher to support network extension card.

5. Menu

5.1 Menu Navigation

Navigation in the DAC menu is exact same as without the network card installed.

5.2 Menu Operation

When the network extension card is correctly installed the Manhattan II menu offers one additional input to select – called 'NTWRK'.

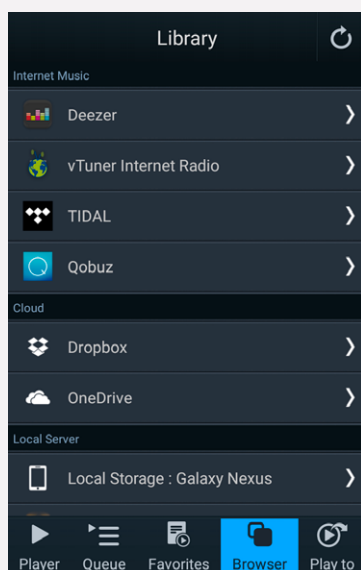
Network module needs some time to fully power-up. When it will be still not ready '**WAIT FOR NETWORK**' will be displayed on the main screen.

Note – When both network and phono pre extension cards are present in the Manhattan selecting the PHONO input always causes the network module to reset. Otherwise there would be audible noise coming from the network extension (This is due to high susceptance [high gain] of the phono pre input). Changing the input back from PHONO triggers power-up of the network module. On the main screen 'WAIT FOR NETWORK' is displayed.

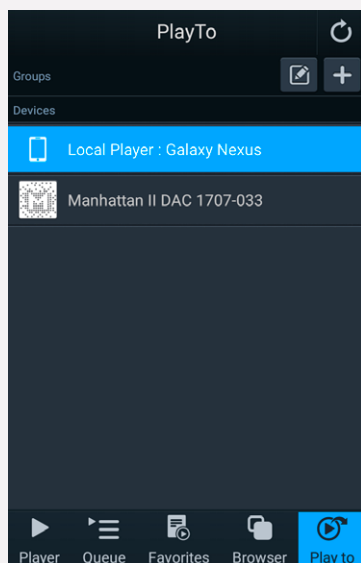
6. Control App

Recommended UPnP controller application for android devices is 'mconnectControl', for iPhone and iPad please use 'mconnectControl HD'.

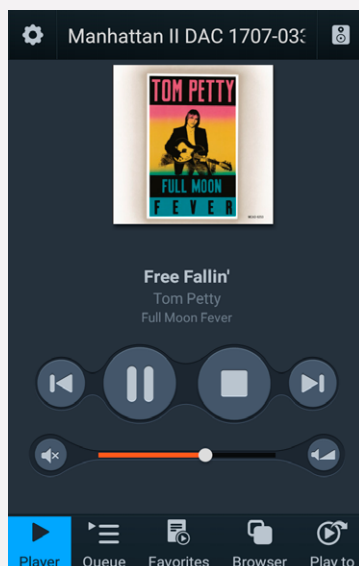
To use the card only as UPnP renderer you can use any UPnP controller app, for example Jcontrol.



To access your music whether on USB flash memory inserted in the card, UPnP server application or streaming service go to the Browser tab.



To enable the streaming to the network card you should choose it in 'Play to' tab of the app.



You can control the volume / mute state of the Manhattan directly with the control app. Just use the volume slider. Still, you can use Apple Remote or change volume through the Manhattan knob.

When using Roon the user interface is Roon Server or Roon Remote.

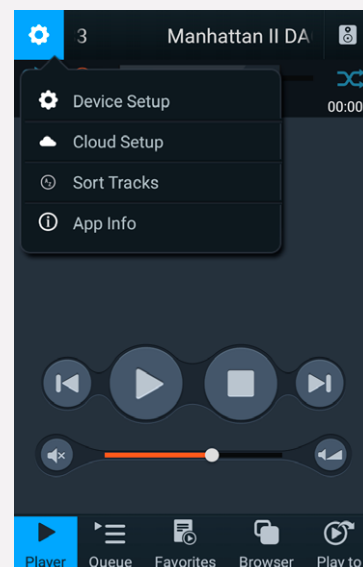
7. Firmware update

To do this you need to be connected to the internet.

The network expansion card has its own firmware. To update it, there must be working internet connection present.

To check if any update is ready, run the 'mconnectControl' or 'mconnectControl HD' app.

Click the settings icon and choose Device Setup. Choose the network card (by default it's name will be in the format 'Manhattan II DAC xxxx-xxx', where xs' are the last digits of the Manhattan serial number).



You will see the technical information about the card, on the bottom end there will be information about firmware update server.

Please don't remove the power from the Manhattan while the card is still updating!.

8. Technical Specification

Bit perfect, low jitter transport, up to 24 bit /192kHz PCM, DSD64, MQA.

Digital Media Server(DMS) function for serial flash memory: USB memory connected to network card module will be a DLNA server.

- **Roon Ready** support [User Interface: Roon Server]
- **TIDAL** streaming music support [User Interface: Mconnect Control & Player App]
- **Deezer** streaming music support [User Interface: Mconnect Control App]
- **Qobuz** streaming music support [User Interface: Mconnect Player App]
- **DLNA/UpnP** [User Interface: Mconnect Control & Player App or other UpnP [Controller App]

Support for Network Audio Protocols:

DLNA/UpnP, Roon Ready (AirPlay and Spotify Connect will be added in future updates)

Control Apps for iOS and Android (DLNA based):

'mconnect Control' for phone and 'mconnect Control HD' for tablet.

Integrated Internet Music:

TIDAL, Deezer, Qobuz, (vTuner, Spotify will be added in future updates)

Firmware upgrade through mConnect Control App – internet connection required.

9. Warranty

Each individual Phono Preamp undergoes comprehensive quality control and a complete test before shipping. This Phono Preamp is warranted by Mytek to the original purchaser against defects in workmanship and materials used in manufacture for a period of two years from the date of purchase.

Faults due to customer misuse, unauthorized modifications or accidents are not covered by this warranty. No other warranty is expressed or implied.

If you suspect that your product is faulty, please contact your local retailer. Prior to shipping customer or retailer must obtain an RMA number from Mytek for warranty services. Units sent without RMA number will not be accepted.

Mytek extends affordable repair service for all units manufactured to date that are not covered by this Warranty. Mytek repair centers are located at Mytek Headquarters in Brooklyn / New York, and in Warsaw / Poland (at Mytek EU Distribution Office).

Important Safety Information

- Read, keep and follow these instructions.
- Connect all your devices before powering the unit.
- Do not expose this device to moisture, rain and liquid of any kind.
- Clean only with dry cloth.
- If any form of liquid or a foreign object enter the device switch it off and unplug it from the power source. Do not operate device until the foreign object is removed or the liquid has completely dried. If doubt please contact Mytek Digital.
- Do not block any ventilation openings. Install in accordance with the manufacturer's instructions.
- Do not install near any heat sources such as radiators, heat registers, stoves, or other apparatus (including amplifiers) that produce heat.
- Do not defeat the safety purpose of the polarized or grounding-type plug. A polarized plug has two blades with one wider than the other. A grounding-type plug has two blades and a third grounding prong. The wide blade or the third prong are provided for your safety. If the provided plug does not fit into your outlet, consult an electrician for replacement of the obsolete outlet.
- Protect the power cord from being walked on or pinched particularly at plugs, convenience receptacles, and the point where they exit from the apparatus.
- Only use attachments/accessories specified by the manufacturer.
- When a cart is used, use caution when moving the cart/apparatus combination to avoid injury from tip-over.
- Unplug this apparatus during lightning storms or when unused for long periods of time.
- Refer all servicing to qualified service personnel. Servicing is required when the apparatus has been damaged in any way, such as power-supply cord or plug is damaged, liquid has been spilled or objects have fallen into the apparatus, the apparatus has been exposed to rain or moisture, does not operate normally, or has been dropped.

Warning

Excessive sound pressure from speakers and headphones can cause hearing loss. In order to use this product safely, avoid prolonged listening at excessive sound pressure levels.

For the customers in the U.S.A.

This equipment has been tested and found to comply with the limits for a Class A digital device, pursuant to Part 15 of the FCC Rules. These limits are designed to provide reasonable protection against harmful interference when the equipment is operated in a commercial environment. This equipment generates, uses, and can radiate radio frequency energy and, if not installed and used in accordance with the instruction manual, may cause harmful interference to radio communications.

You are cautioned that any changes or modifications not expressly approved in this manual could void your authority to operate this equipment.

All interface cables used to connect peripherals must be shielded in order to comply with the limits for a digital device pursuant to Subpart B of Part 15 of FCC Rules.

This device complies with Part 15 of the FCC Rules. Operation is subject to the following two conditions: (1) this device may not cause harmful interference, and (2) this device must accept any interference received, including interference that may cause undesired operation.

This product with the CE marking complies with the EMC Directive issued by the Commission of the European Community. Compliance with this directive implies conformity to the following European standards:

- EN55103-1 : Electromagnetic Interference (Emission)
- EN55103-2 : Electromagnetic Susceptibility (Immunity)

This product is intended for use in the following Electromagnetic Environments: E1 (residential), E2 (commercial and light industrial), E3 (urban outdoors), E4 (controlled EMC environment, ex. TV studio).

Information on Disposal for Users of Waste Electrical & Electronic Equipment(private households).

The Wheelie Bin symbol on the products and/or accompanying documents means that used electrical and electronic products should not be mixed with general household waste. Disposing of this product correctly will help save valuable resources and prevent any potential negative effects on human health and the environment.

To properly dispose harmful substances and recycle the product, the user is obliged to return it at the point of collection of electrical and electronic equipment waste. For more information please contact your local authorities, waste disposal units or retailer.



